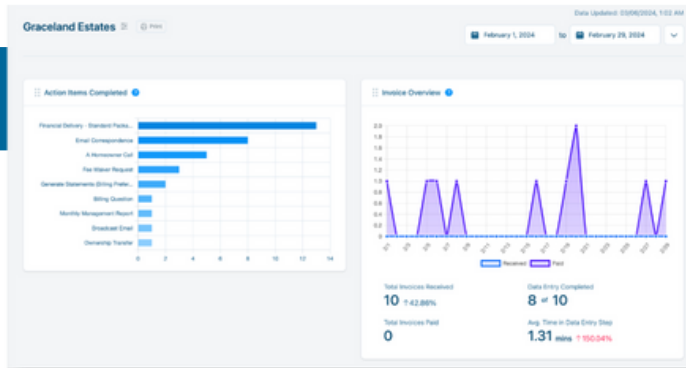


# Vantaca IQ for Community Managers

Vantaca IQ provides community managers with the tools to demonstrate their value to association boards, manage tasks efficiently, and balance workloads across multiple associations.



## 1. Prove value to your boards.

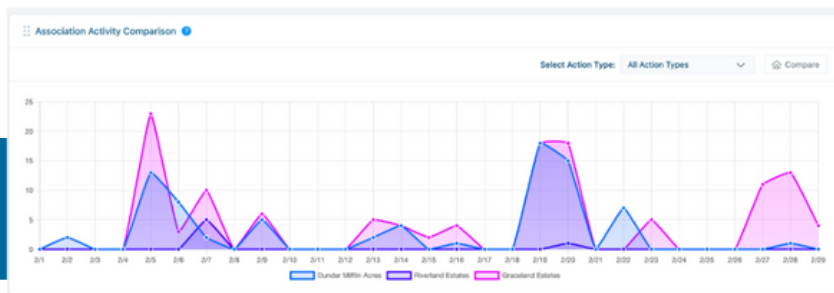
Demonstrate your team's accomplishments to boards by showcasing the comprehensive scope of work completed at your upcoming board meeting! Be transparent about the progress you've made, what you are working on, and what is still outstanding.

## 2. Stay up-to-date on your outstanding tasks.

Address unread messages and open items for yourself and the open items for each association you manage in a timely manner. Sort tasks by association or how long they've been open to improve your response times to homeowners. Employees using Vantaca IQ see on average a 5% reduction in open action items.

The screenshot shows the 'Millie Manager' dashboard with a table of open items. The table has columns for ID, Association, Type, Step, Last Activity, and Days Open. The data is as follows:

ID	Association	Type	Step	Last Activity	Days Open
10307	Presidential Valley	Association Task	Received	03/10/2024, 3:37 PM	1,455
10812	DC Valley, Inc	Budget Tracking	Budget Prep	01/26/2024, 8:45 AM	586
10810	Presidential Valley	Budget Tracking	Budget Prep	01/26/2024, 8:45 AM	586
10718	The Best HOA Ever	Low Bank Balance Alert	Low Bank Balance	02/28/2024, 2:16 AM	523
10790	Presidential Valley	Association Task	Previously Held, Ready for ...	01/10/2024, 2:05 AM	621
10203	Presidential Valley	Budget Tracking	Budget Prep	01/14/2024, 1:04 PM	417
10279	Presidential Valley	Vendor Invoice Image	Review Report	01/10/2024, 2:16 AM	476
10268	Graceland Estates	Low Bank Balance Alert	Low Bank Balance	12/10/2023, 2:02 AM	446
10268	Hopeworth School of Wilkes...	Breakfast Survey	Review Survey Document	01/26/2024, 9:04 PM	415
10310	Dundee Millin Acres	Invoice	Manager Complete Data En...	01/26/2024, 1:07 PM	410



## 3. Track your workload from each association you manage

Compare the activities you perform across your portfolio of associations. This helps you identify any communities that may need more of your attention or any communities that have an elevated number of issues to resolve.